



GURUDUTT SHALEYA SAHITYA

INDEX

General Science Section	
1.	Basic Science Through Pictures
2.	Agriculture Charts
3.	Genetic & Evolution (Pedigree) Charts
4.	Working Science Model Charts
5.	Cycles in Nature
6.	3-D Plastic Raised Embossed Charts

Physics Section	
1.	Physics Charts
2.	Periodic Table of Elements
3.	3-D Plastic Raised Embossed Charts

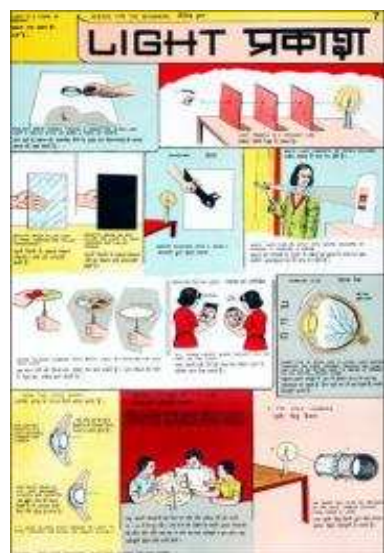
Chemistry Section	
1.	Chemistry Through Pictures
2.	Great Scientists
3.	3-D Plastic Raised Embossed Charts

Zoology & Botany Section	
1.	Life History Charts
2.	Life History Anatomy Charts
3.	Detailed Botany Charts
4.	3-D Plastic Raised Embossed Charts



GENERAL SCIENCE SECTION

1. BASIC SCIENCE THROUGH PICTURES Size: 50 x 75 cm
(Set of 14 charts – English & Hindi combined)



Price: Rs.1680/- per set, Rs.120/- each

1. Air
2. Plants
3. Water
4. Light
5. Forces & Measurement
6. Man: Skeleton-Joints-Muscles
7. Man: Eye-Ear-Teeth-Digestion
8. Man: Nervous-Respiratory-Blood Circulation
9. Reproduction in Animals
10. Atomic energy
11. Space & Travel (Part1)
12. Space & Travel (Part2)
13. Life in Sea (Part1)
14. Life in Sea (Part2)

2. AGRICULTURE CHARTS
Size: 50 x 75 cm

(Set of 4 charts – English & Hindi combined)

Price: Rs.480/- per set

1. Improved Agricultural Implements
2. Crop Pest
3. Crop Rotation
4. Bio-gas

3. GENETIC & EVOLUTION (PEDIGREE) CHARTS
English (Polyart paper)

Size: 70 x 100 cm

Price: Rs.500/- each

- | | |
|---|--|
| <ol style="list-style-type: none"> 1. Pedigree Analysis 1: Showing standard symbols used in Pedigree analysis & Sample Pedigree 2. Pedigree Analysis 2: Showing Autosomal Dominant Trait Pedigree such as Myotonic Dystrophy & Tongue Curler Pedigree 3. Pedigree Analysis 3: Showing Autosomal Recessive Trait Pedigree such as Inheritance of Attached Ear Lobe & Inheritance of Sickle cell Anemia 4. Pedigree Analysis 4: Showing X-linked Recessive Trait Pedigree such as Haemophilia & Colour Blindness Pedigree 5. Pedigree Analysis 5: Showing X-linked Dominant Trait Pedigree such as Droopy Eyelids & Hypophosphatemia | <ol style="list-style-type: none"> 6. Pedigree Analysis 6: Showing Y-linked Trait – Hairy Ear & Mitochondrial Inheritance 7. Homologous Organs- Animals 8. Homologous Organs- Plants 9. Analogous Organs- Animals 10. Analogous Organs- Plants 11. Hybridisation 1: Monohybrid Cross 12. Hybridisation 2: Dihybrid Cross 13. Hybridisation 3: Incomplete Dominance |
|---|--|



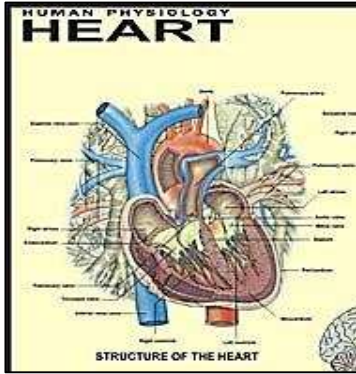
Gurudutt
Shaleya
Sahitya

SCIENCE SECTION

4. WORKING SCIENCE MODEL CHARTS

Size: 40 x 48 cm

Price: Rs.900/- each



General

1. Water Cycle
2. Carbon Cycle
3. Oxygen Cycle

4. Nitrogen Cycle
5. Mineral Cycle
6. Diesel Engine
7. Petrol Engine
8. DNA
9. RNA
10. Food Chain
11. Structure of Atom
12. Air Pollution
13. Water Pollution
14. Plant Cell
15. Animal Cell
16. Silkworm
17. Mosquito
18. Typical Flower
19. Seed Germination

20. Sources of energy
21. Global Warming
22. Solar System
23. Pollution & Environment
24. Rain Water Conservation
25. Windmill
26. Bio-gas
27. Volcano
28. Earthquake
29. Tsunami
30. Day & Night
31. Phases of Moon
32. Eclipse

Human Anatomy

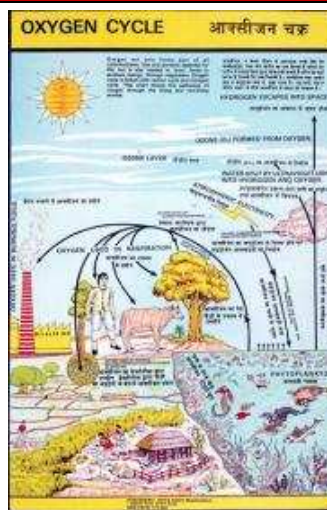
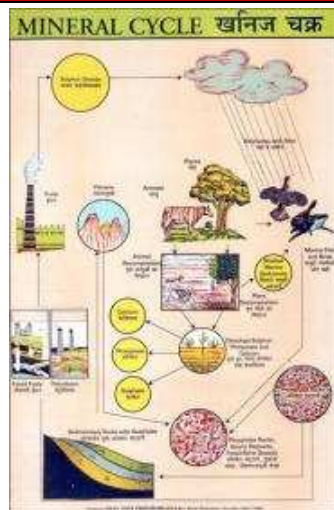
1. Skeleton
2. Eye
3. Ear
4. Brain
5. Heart
6. Lungs
7. Liver
8. Kidney
9. Blood Circulation
10. Digestive System
11. Excretory System
12. Respiratory System
13. Nervous System

5. CYCLES IN NATURE (English, Hindi)

Laminated charts

Size: 50 x 70 cm

Price: Rs.140/-



1. Carbon Cycle
2. Nitrogen Cycle
3. Oxygen Cycle
4. Water Cycle
5. Mineral Cycle

6. 3D RAISED RELIEF PLASTIC CHARTS (Set of 10)

Size: 12 X 16 inches

Price: Rs.650/- set



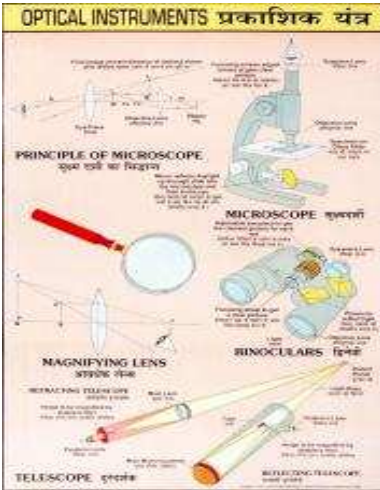
1. Work & Energy
2. Source of Energy
3. Force
4. Motion & Types of Motion
5. Part of a Plant
6. Roots of Stems
7. Photosynthesis
8. Seed Germination
9. Classification of Animals
10. Sense Organ



SCIENCE SECTION

PHYSICS SECTION

1. PHYSICS CHARTS (English & Hindi) Size: 55 x 90 cm Price: Rs.180 each



1. Telescope
2. Ohm's law
3. Pascal's Law
4. 3 Kinds of Lever
5. Electromagnetism
6. Electrical Symbols
7. Dynamo
8. Petrol Engine
9. Steam Engine
10. Wave Motion
11. Light
12. X-Rays
13. Radioactivity
14. Measurements
15. Electroplating
16. Diode
17. Wave Motion
18. Moment & Couple
19. Work & Power
20. Magnetism
21. Newton's Laws of Motion
22. Pulleys (Simple Machines)
23. Balance (Principle of Archimedes)
24. The eyes: it's Defects & Remedies
25. 3 Types of Equilibrium
26. Metric Weights & Measurements
27. Optical Instruments & Microscopes
28. Rocket & Artificial Satellite
29. Refraction of Light
30. Refraction of Light by a Prism
31. Refraction of Light by Spherical Lenses
32. Renewable Sources of Energy
33. Wind Energy
34. Static Electricity
35. Heat & Temperature
36. Sound
37. Different kinds of Primary Cells

2. PERIODIC TABLE OF ELEMENTS IN DIFFERENT SIZES (English) New & Latest



MENDELEEV'S PERIODIC TABLE CHART
(Laminated) Price : Rs.240/-



New & Latest MOSLEY'S LONG FORM PERIODIC TABLE
– Showing 118 Elements
Size Price
140 x 100 cm Rs.450/-
100 x 70 cm Rs.240/-
50 x 36 cm Rs.120/-
37 x 24 cm Rs.60/-

3. 3D RAISED RELIEF PLASTIC CHARTS (Set of 10) Size: 12 X 16 inches Price: Rs.650/- set



1. Production of Sound
2. Propagation of Sound
3. Light
4. Reflection of Light
5. Refraction of Light through Prism
6. Formation of Image
7. Electric Charge
8. Ohm's Law
9. Electrolysis
10. Gold Leaf Electroscope



CHEMISTRY SECTION

**1. CHEMISTRY CHARTS
(English & Hindi)**

**Size: 55 x 90 cm
Price: Rs.180 each**



1. Purification of Water
2. Manufacture of Cement and Quick Lime
3. Preparation of Sulphur Dioxide & Sulphuric Acid by Chamber and Contact Process
4. Manufacture of Bleaching Powder and Soap
5. Preparation of Chlorine and Manufacture of Hydrochloric Acid
6. Nuclear Energy (Fission & Fusion Reactions; Nuclear Reactor)
7. Preparation of Nitrogen and Manufacture of Nitric Acid from Nitre
8. Preparation of Ammonia and Manufacture of Ammonia by Haber's Process
9. Petroleum
10. Manufacture of Sodium Hydroxide & Sodium Carbonate (Ammonia Soda Process)
11. Preparation of Oxygen & Liquefaction of Air
12. Extraction of Iron (Blast Furnace) & Manufacture of Steel
13. Separation of Substances
14. Chemical Reactions
15. Chemical Reactivity of Elements
16. Composition of Water By Weight Electrolysis and Synthesis of Water
17. Aluminium Metallurgy
18. Preparation of Hydrogen and Carbon Dioxide
19. Sulphur & Phosphorus
20. Manufacture of Glass (All Types)
21. Valencies of Elements
22. Structure of Atom
23. Chemical Bonding
24. Copper and Its Alloys
25. Manufacture of Magnesium
26. Extraction of Zinc
27. Organic Chemistry I (Allotropy; Alkanes, Alkenes and Alkynes)
28. Organic Chemistry II (Alcohols, Esters and Organic Acids)
29. Laboratory Techniques
30. Laboratory Safety

**2. PORTRAITS OF GREAT SCIENTISTS
(English)**

**Size: 35 x 50 cm
Price: Rs.120 each**

- | | |
|-----------------------|---------------------|
| 1. Thomas Alva Edison | 5. Albert Einstein |
| 2. Sir Isaac Newton | 6. Galileo Galilee |
| 3. Dr. J. C. Bose | 7. Dr. C. V. Raman |
| 4. Madam M. S. Curie | 8. Dr. H. J. Bhabha |

**3. 3D RAISED RELIEF PLASTIC CHARTS
(Set of 10)**

**Size: 12 X 16 inches
Price: Rs.650/- set**



1. Formation of Compounds
2. Properties of Substances
3. Classification of Matter
4. Nature of Matter
5. Covalent Bond
6. Types of Chemical Reaction
7. Types of Chemical Reaction 2
8. Carbon & Carbon Compounds
9. Hydrogen Sulfide
10. Chemical Reactions



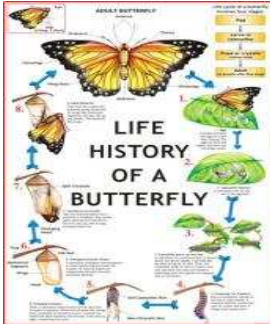
ZOOLOGY & BOTANY SECTION

1. LIFE HISTORY CHARTS (English & Hindi combined)

Laminated charts

Size: 55 x 90 cm

Price: Rs.180 each



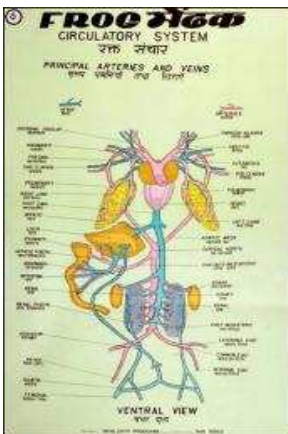
1. Life History of Frog
2. Life History of Mosquito (Anopheles & Culex)
3. Life History of Butterfly
4. Life History of Housefly
5. Life History of Silk Worm
6. Life History of Honey Bee
7. Life History of Roundworm (Filariasis)
8. Life History of Tapeworm
9. Life History of Malaria Parasite (Plasmodium)
10. Life History of Amoeba
11. Life History of Liver Fluke
12. Virus
13. Kreb's Cycle
14. Harmful Insects
15. Beneficial Insects
16. Food Habits of Birds (Beaks & Feet)
17. Rabbit Anatomy
18. Meiosis in Animals
19. Mitosis in Animals
20. Ultra-Structure of Plant & Animal Cell
21. Hookworm
22. Paramecium
23. Fish Anatomy
24. Human Blood Cell
25. Hydra
26. Animal Cell (Under Electron Microscope)
27. Animal Kingdom
28. Analogous & Homologous Organs
29. Protozoa
30. Various Animal Tissues
31. DNA
32. RNA
33. Food Chain
34. Chromosomes & Genes
35. Spermatogenesis
36. Oogenesis
37. Amphioxus
38. Grasshopper : Incomplete Metamorphosis
39. Cat
40. Perch
41. Starfish
42. Hen's Egg
43. Vectors
44. Tobacco Mosaic Virus
Cancer Cells

2. LIFE HISTORY ANATOMY CHARTS (English & Hindi combined)

Laminated charts

Size: 55 x 90 cm

Price: Rs.180 each

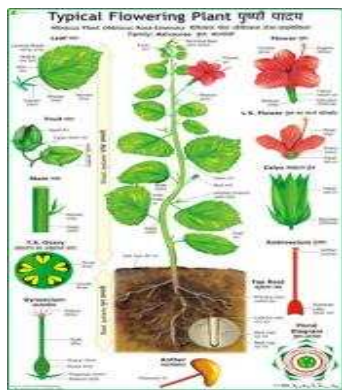
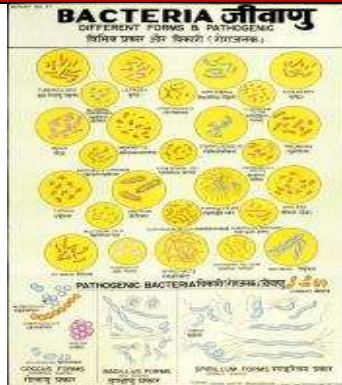


1. RAT ANATOMY
 - Rat Digestive System
 - Rat External Character (Female)
 - Rat Arterial System
 - Rat Venous System
 - Rat Urogenital System (Male & Female)
2. COCKROACH ANATOMY
 - Cockroach: Digestion, Excretory, Skin & Muscles
 - Cockroach: Morphology & Reproduction
 - Cockroach: Blood Circulation, Respiratory & Nervous System
3. EARTHWORM ANATOMY
 - Earthworm: Blood Circulation, Respiratory & Nervous System
 - Earthworm: Digestion, Skin & Excretion
 - Earthworm: Ext. Morphology & Preproduction
4. FROG ANATOMY
 - Life History of Frog
 - Excretory System
 - Brain
 - Blood Circulation
 - Reproductive System
 - Respiratory System
 - Skeleton
 - Cells & Tissues
 - Heart
 - Histology
 - Dissection
 - Arterial System
 - Digestive System



3. DETAILED BOTANY CHARTS (English & Hindi combined)
Laminated charts

Size: 55 x 90 cm
Price: Rs.180/-



1. Typical Flowering Plant
2. Seeds and Embryos
3. Reproduction in Plants
4. Adaptation in Plants
5. Dispersal of Fruits and Seeds
6. Kinds of Roots (Root Modification)
7. Medicinal Plants
8. Dihybrid Cross
9. Stem Modification
10. Vegetative Propagation
11. Leaves
12. Plant Diseases
13. Monohybrid Cross
14. Flowers
15. Fruits
16. Succulent Fruits
17. Pollination
18. Fertilization
19. Germination of Bean Seed & Pea ()
Hypogeal Germination
20. L.H. of Fern
21. Germination of Dicot Seed
22. Plant Cell (Under Electron Microscope)
23. Green Algae
24. Fertilization and Pollination of Flower
25. Insectivorous Plants
26. Inflorescence
27. Plant Cells and Tissues
28. T.S. Root (Monocot and Dicot)
29. T.S. Leaf (Monocot and Dicot)
30. T.S. Stem (Monocot and Dicot)
31. Classification of Plant (Plant Kingdom)
32. Artificial Vegetative Propagation
33. L.H. of Moss
34. Meiosis
35. Mitosis
36. Photosynthesis
37. Mushroom
38. Calyx & Corolla
39. Parasitic Plants
40. Respiration
41. Bacteria
42. Spirogyra
43. Mucor
44. Types of Fungi Composite

4. 3D RAISED RELIEF PLASTIC CHARTS
(Set of 10)

Size: 12 X 16 inches
Price: Rs.650/- set

ZOOLOGY CHARTS



1. DNA
2. RNA
3. Amoeba
4. Paramecium
5. Hydra
6. Liver Fluke
7. Life Cycle of a Frog
8. Life Cycle of a Housefly
9. Life Cycle of a Butterfly
10. Life Cycle of a Mosquito

BOTANY CHARTS



1. Type of Inflorescence
2. Spirogyra
3. The Flower
4. Plant Cell
5. Anatomy of a Dicot Root
6. Anatomy of a Dicot Stem
7. Anatomy of a Dicot Leaf
8. Anatomy of a Monocot Root
9. Anatomy of a Monocot Stem
10. Anatomy of a Monocot Leaf



Terms & Conditions

- ❖ Actual products may vary from the colors or pictures shown in the catalogue.
- ❖ All charts models and instruments depicted in the catalogue are copy right of their respective publishers and manufacturers.
- ❖ The company is not responsible for any misprinting or misrepresentation in the same.

- ❖ All the items of the catalogue are offered from ready stock, subject to availability at the time of supply.
- ❖ All Prices are NETT, Ex. Godown
- ❖ Packing and forwarding charges will be extra.
- ❖ Taxes as per govt. rules will be charged extra.
- ❖ Form, if any, required by the govt. for entry of goods in other states may be sent along with purchase order.
- ❖ Goods will be dispatched after the receipt of purchase order along with the payment.
- ❖ Please mention clearly the Catalogue Code and item code at the time of placing order.
- ❖ Write clearly the mode of dispatch Transport/Courier.
- ❖ MENTION your VAT/CST Registration No.,Name and Address of your Bankers along with your Bank A/C NO.
- ❖ Please Mention your LBT Registration Number
- ❖ The warranty/responsibility for any quantity shortage or manufacturing defect in any product will considered only if the same is intimated to the company at the time of delivery of material or at most within one week (subject to situation so arising)
- ❖ Prices and specification are subject to change without any prior notice.
- ❖ All disputes are subject to Pune Jurisdiction only.